



Crusoe Villa

One Bedroom
Total area 235 sqm.

The original, secluded Robinson Crusoe hideaway with an upper floor outdoor terrace.



The Robinson Crusoe castaway experience inspired us in terms of name and design. Walk the rope-tied gangway leading to your tropical terrace. Shower beneath sun or stars in your garden bathroom.

The beach is at your doorstep. Tucked amidst the greenery on the island's white sands, the beauty of nature surrounds.

All the luxurious details

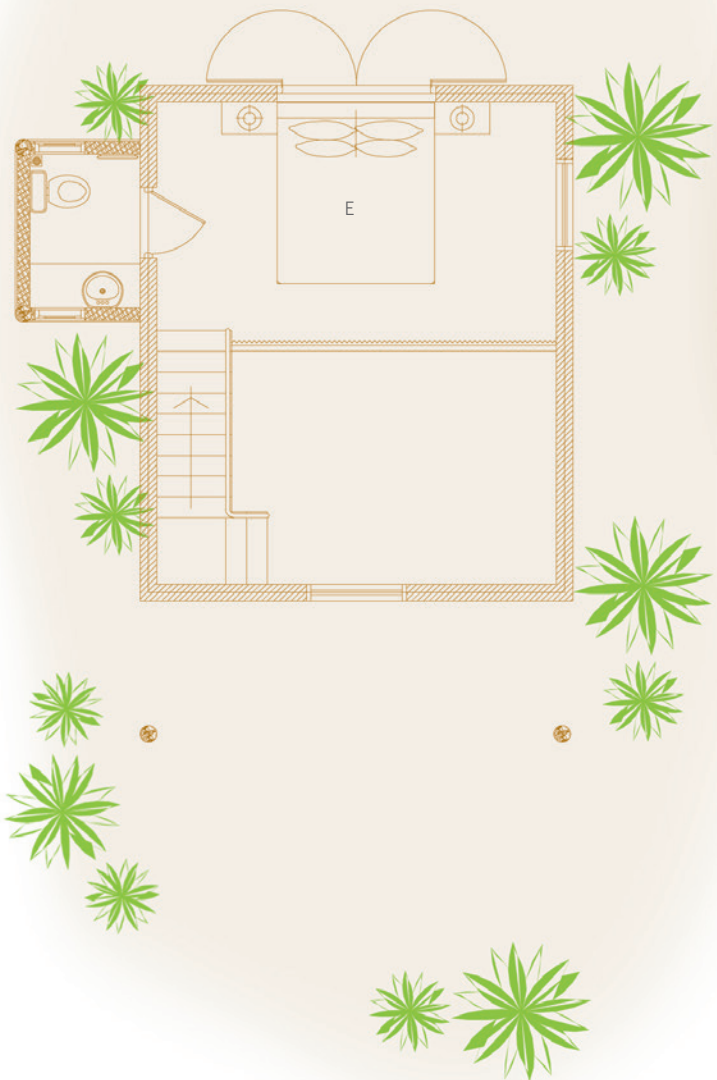
- Beachfront villa with upstairs bedroom and en-suite toilet
- Downstairs living room with large daybed
- Free standing bathtub and two separate showers in garden
- Gangway with ropes leading to terrace
- Dining table and large daybed for two on terrace
- Staircase from garden directly to terrace
- Overhead fan, air conditioning, extensive mini bar and personal safe
- DVD player and Bose Hi-fi system with docking station for personal iPods
- iPods in all villas preloaded with music and movie selection
- Open-air garden bathroom with bathtub, shower and a double sink unit with large over hanging mirror
- Private outside sitting area with sun loungers and direct access to beach
- Bicycles are provided for all villas
- Wi-Fi connection is provided in villa on request
- Mr/Mrs Friday (Butler) service for all villas
- IDD telephones



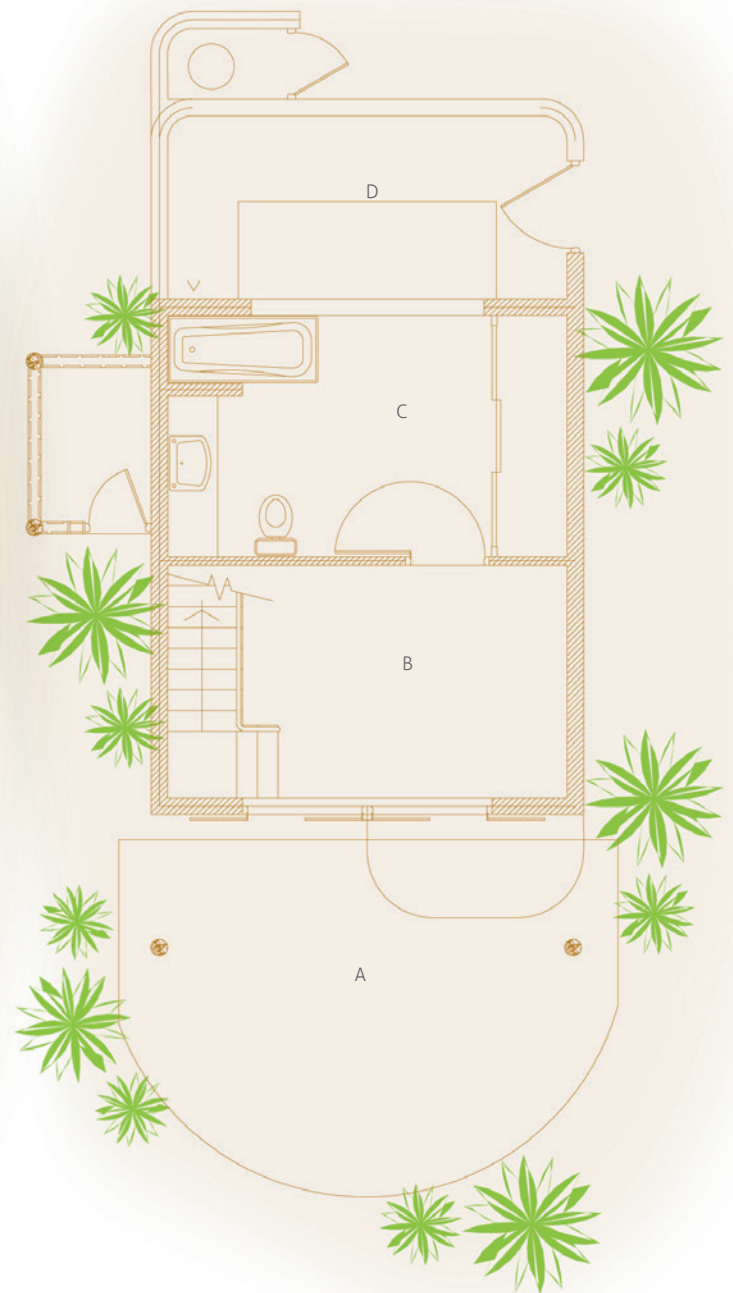
More images :

<http://www.soneva.com/soneva-fushi/villas/crusoe-villa/>

First Floor



Ground Floor



Crusoe Villa

- A Deck
- B Living Room
- C Bathroom & Dressing room
- D Outdoor Bathroom
- E Bedroom

